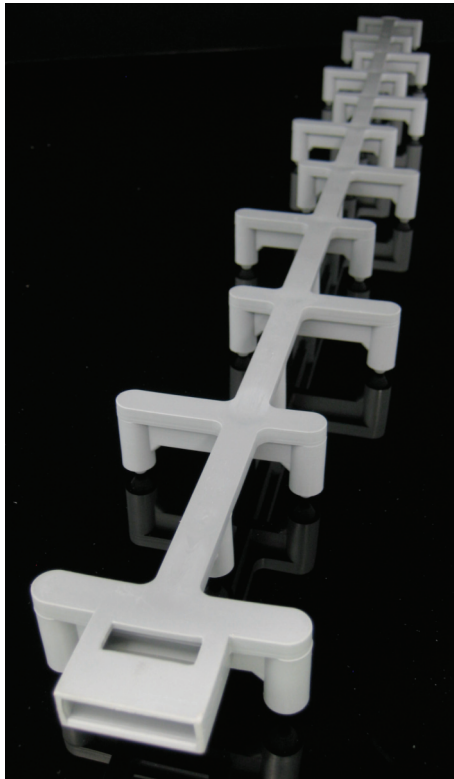
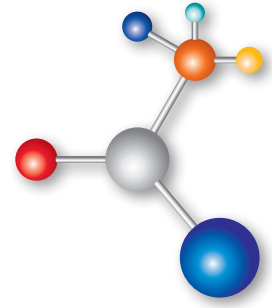


Continuous Deck Rail



Description

The 750mm long plastic Deck Rail is a continuous spacer which is strong and stable for formwork applications. The Deck Rail is designed with sets of vertical legs at approximately 75mm centres and another vertical leg in between the sets, allowing a free concrete flow and having pointed tips on the base for minimal form contact.

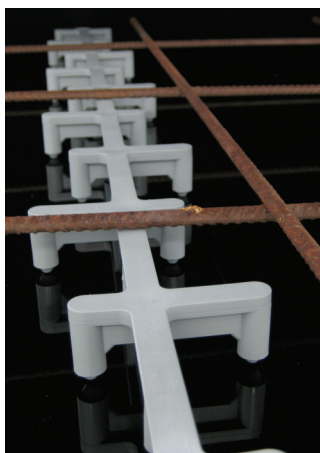
Another feature is the unique connection system at each end to enable joining to any given length on site. Once connected the clip will not separate, which is important for large projects.

Eliminates the need for clipping bar chairs onto the reinforcement or “chairing up” after the reinforcement has been placed.

Size Availability

Available in heights from 25mm to 100mm in 5mm increments.

For heights over 100mm, our combination top deck spacers and single height chairs are available.

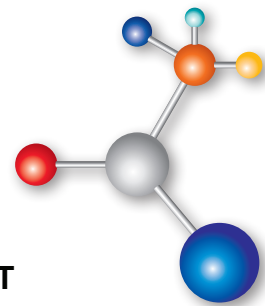


Ideal for

- Suspended Decks
- Precast or Tilt-Up Panels
- Insitu Precast Beams
- Slabs on Blinding Concrete



Continuous Deck Rail



DIMENSIONS

PRODUCT CODE	HEIGHT "h"	MASS (kg) PER BAG	PALLET QTY
BDR025	25	16.3	2000
BDR030	30	17.5	1700
BDR035	35	19.0	1700
BDR040	40	20.0	1500
BDR045	45	21.5	1500
BDR050	50	22.6	1300
BDR055	55	24.1	1300
BDR060	60	25.4	1200
BDR065	65	26.5	1200
BDR070	70	27.9	1100
BDR075	75	29.1	1100
BDR080	80	30.4	1000
BDR085	85	31.7	1000
BDR090	90	33.0	900
BDR095	95	34.0	900
BDR100	100	34.5	900

